

# Elastomeric Rod Ends for Aircraft Interiors

Lord elastomeric rod ends isolate noise and high-frequency vibration in a broad range of aircraft applications. Available in stainless steel or aluminum, these elastomeric rod ends provide all-axis motion control and isolation, offering distinct advantages over conventional rod ends. One key difference is that there are no internal or moving parts or metal-to-metal contact points which can lead to poor performance in a harsh environment.

## Features & Benefits

Lord elastomeric rod ends are easily interchangeable with conventional rod ends and provide superior performance by:

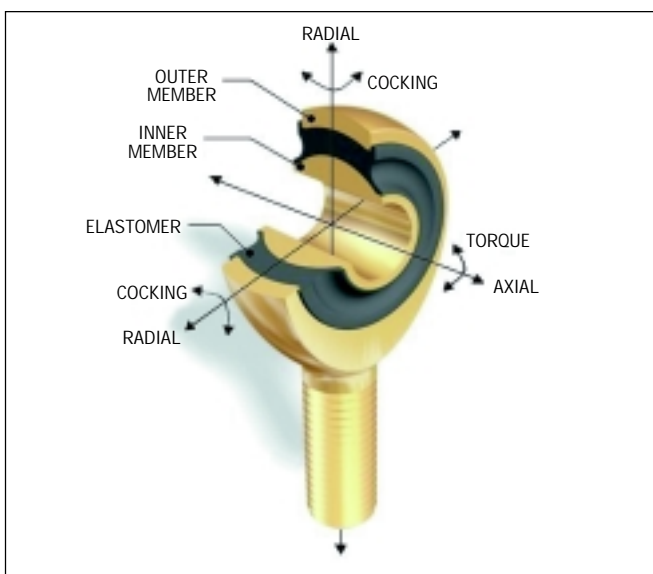
- Reducing rattle and buzzing
- Reducing vibration
- Reducing radiated noise
- Providing a thermal barrier
- Increasing passenger comfort

In addition, unlike conventional rod ends, Lord rod ends:

- Are easy to install and maintenance free
- Need no lubrication
- Will have no galling, brinelling, or stress corrosion
- Will not be damaged by grit or dirt
- Have no break-away force or slip/stick characteristics
- Resist contaminants, dirt and ozone
- Accommodate misalignment



Typical Elastomeric Rod Ends



An elastomeric rod end provides all-axis motion control and isolation

## Typical Applications

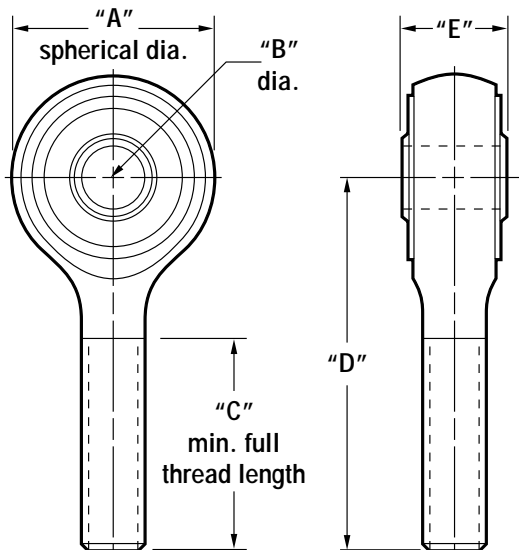
- Galley
- Stowage bins
- Bulkheads/monuments
- Lavatory
- Utility channels
- Crew rests
- Interior trim
- Sensitive equipment

**LORD**

SOLUTIONS FOR A WORLD IN MOTION

# Elastomeric Rod Ends

P/N	Material	A in. (mm)	B in. (mm)	C in. (mm)	D in. (mm)	E in. (mm)	Thread	Thread Direction	Radial Stiffness lbs/in (N/mm)	Radial Ultimate Load lbs (N)
RA -75-11-1	7075 Al	.75 (19.1)	.251 (6.38)	0.62 (15.7)	1.20 (30.5)	.398 (10.11)	1/4-28UNF -2A	RH	7000 (1230)	2500 (11100)
RA -75-11-2	"	"	"	"	"	"	"	LH	"	"
RA -75-12-1	7075 Al	.75 (19.1)	.251 (6.38)	0.85 (21.6)	1.50 (38.1)	.398 (10.11)	1/4-28UNF -2A	RH	4000 (700)	2200 (9800)
RA -75-12-2	"	"	"	"	"	"	"	LH	"	"
RA -75-13-1	15-5PH SS	.75 (19.1)	.251 (6.38)	1.07 (27.2)	1.70 (43.2)	.398 (10.11)	1/4-28UNJF -3A	RH	12500 (2200)	4900 (21800)
RA -75-13-2	"	"	"	"	"	"	"	LH	"	"
RA -80-11-1	7075 Al	.80 (20.4)	.251 (6.38)	0.85 (21.6)	1.50 (38.1)	.436 (11.07)	1/4-28UNF -2A	RH	7000 (1200)	2400 (10700)
RA -80-11-2	"	"	"	"	"	"	"	LH	"	"
RA -80-20-1	15-5PH SS	.80 (20.4)	.251 (6.38)	1.00 (25.4)	1.56 (39.6)	.436 (11.07)	5/16-24UNJF -3A	RH	4100 (700)	7300 (32500)
RA -80-26-1	7075 Al	.80 (20.4)	.251 (6.38)	0.62 (15.7)	1.13 (28.7)	.436 (11.07)	1/4-28UNF -2A	RH	17000 (3000)	2400 (10700)
RA -80-26-2	"	"	"	"	"	"	"	LH	"	"
RA -80-27-1	7075 Al	.80 (20.4)	.251 (6.38)	0.80 (20.3)	1.50 (38.1)	.436 (11.07)	5/16-24UNF -2A	RH	7000 (1200)	2400 (10700)
RA -80-27-2	"	"	"	"	"	"	"	LH	"	"
RA -80-28-1	7075 Al	.80 (20.4)	.251 (6.38)	1.15 (29.2)	1.85 (47.0)	.436 (11.07)	5/16-24UNF -2A	RH	7000 (1200)	2400 (10700)
RA -80-28-2	"	"	"	"	"	"	"	LH	"	"
RA -90-25-1	7075 Al	.90 (22.9)	.313 (7.95)	1.30 (33.0)	2.15 (54.6)	.474 (12.04)	3/8-24UNF -2A	RH	4000 (700)	4800 (21400)
RA -90-25-2	"	"	"	"	"	"	"	LH	"	"
RA -90-26-1	7075 Al	.90 (22.9)	.251 (6.38)	0.80 (20.3)	1.50 (38.1)	.474 (12.04)	5/16-24UNF -2A	RH	7000 (1200)	3600 (16000)
RA -90-26-2	"	"	"	"	"	"	"	LH	"	"
RA -90-27-1	7075 Al	.90 (22.9)	.251 (6.38)	1.05 (26.7)	1.75 (44.5)	.474 (12.04)	3/8-24UNF -2A	RH	4000 (700)	5600 (24900)
RA -90-27-2	"	"	"	"	"	"	"	LH	"	"
RA -90-28-1	7075 Al	.90 (22.9)	.251 (6.38)	1.30 (33.0)	2.01 (51.1)	.474 (12.04)	5/16-24UNF -2A	RH	7000 (1200)	3600 (16000)
RA -90-28-2	"	"	"	"	"	"	"	LH	"	"
RA -100-3-7	15-5PH SS	1.02 (26.0)	.376 (9.55)	0.80 (20.3)	1.54 (39.1)	.499 (12.67)	3/8-24UNJF -3A	RH	27300 (4800)	12000 (53400)



**Note:** These are just some of the rod ends that we have available. Lord can formulate custom elastomers to meet special requirements including broad temperature range, low smoke/toxicity, chemical resistance, a specific modulus and/or damping factor. Standard metric thread sizes could also be made available. If you do not find the exact product you need listed above, please contact us to discuss how we can provide a product that more exactly fits your application.

**Lord Mechanical Products**  
 2000 West Grandview Blvd.  
 P.O. Box 10038  
 Erie, PA 16514-0038  
 Tel: 814/868-0924  
 Toll Free: 877/494-0399  
 Fax: 814/864-3452  
 www.lordmpd.com

**Lord S.A.**  
 Immeuble Strategy Ctr.  
 10 Rue des Gaudines  
 F78100 Saint Germain-en-Laye  
 France  
 Tel: +33 (1) 3087-0578  
 Fax: +33 (1) 3087-0827

**Lord Singapore**  
 1 Marine Parade Central  
 #13-01 Parkway Centre  
 Singapore 449408  
 Tel: +65-346-3082  
 Fax: +65-348-6928

**Lord GmbH**  
 Osterladekop 89B  
 D - 21635 Jork  
 Hamburg  
 Germany  
 Tel: +49-4162-912877  
 Fax: +49-4162-912878

**Lord Corp. Europe Ltd.**  
 Victoria House  
 Victoria Street, Taunton  
 Somerset TA1 3FA  
 England  
 Tel: +44 (0)1823-270-188  
 Fax: +44 (0)1823-322-828



SOLUTIONS FOR A WORLD IN MOTION